



AP[®] Music Theory: Sight-Singing 2007 Free-Response Questions

The College Board: Connecting Students to College Success

The College Board is a not-for-profit membership association whose mission is to connect students to college success and opportunity. Founded in 1900, the association is composed of more than 5,000 schools, colleges, universities, and other educational organizations. Each year, the College Board serves seven million students and their parents, 23,000 high schools, and 3,500 colleges through major programs and services in college admissions, guidance, assessment, financial aid, enrollment, and teaching and learning. Among its best-known programs are the SAT[®], the PSAT/NMSQT[®], and the Advanced Placement Program[®] (AP[®]). The College Board is committed to the principles of excellence and equity, and that commitment is embodied in all of its programs, services, activities, and concerns.

© 2007 The College Board. All rights reserved. College Board, Advanced Placement Program, AP, AP Central, SAT, and the acorn logo are registered trademarks of the College Board. PSAT/NMSQT is a registered trademark of the College Board and National Merit Scholarship Corporation.

Permission to use copyrighted College Board materials may be requested online at:
www.collegeboard.com/inquiry/cbpermit.html.

Visit the College Board on the Web: www.collegeboard.com.

AP Central is the official online home for the AP Program: apcentral.collegeboard.com.

2007 AP[®] MUSIC THEORY FREE-RESPONSE QUESTIONS

MUSIC THEORY

SECTION II, Part B

Time — Approximately 8 minutes

Questions 1 and 2


Assignment: For each of the two given melodies, sing the pitches in accurate rhythm and with a steady tempo.

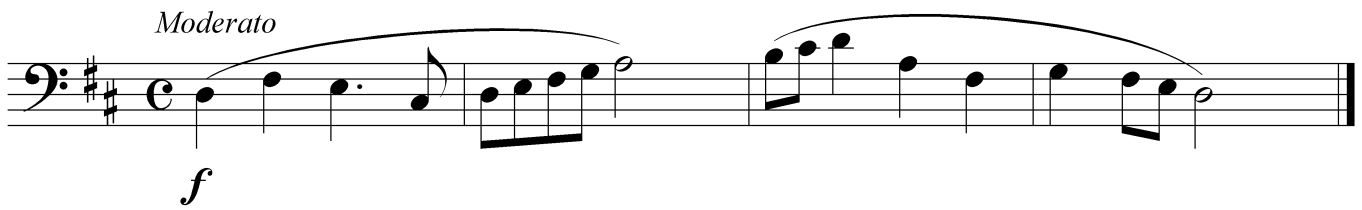
Procedure: For each melody, you will have 75 seconds to practice and 30 seconds to perform the melody. You will hear the starting pitch for each melody at the beginning of the 75-second practice period. After the end of the practice period, you will have 30 seconds to perform the melody. A recorded announcement will alert you to the end of each practice and performance period. Directions on the recording will assist you in operating the recorder.

Your performance:


- a) You may sing note names (*c-d-e*), syllable names (*do-re-mi*), scale-degree numbers (*1-2-3*), or a neutral syllable (for example, *ta-ta-ta*).
- b) Even though you will hear the starting pitch of the printed melody, you may transpose the melody to a register that is comfortable.
- c) You should use some of the warm-up and practice time to perform out loud. You may write on the music if you wish.
- d) You may not use any device (for example, a metronome or a musical instrument) to assist you in your practice or performance.
- e) You will be evaluated on pitch accuracy (relative to tonic), rhythm, and continuity (maintaining a steady tempo). You may start over if you need to, but there will be a deduction from your score. You will not be evaluated on the quality of your singing voice.

2007 AP[®] MUSIC THEORY FREE-RESPONSE QUESTIONS

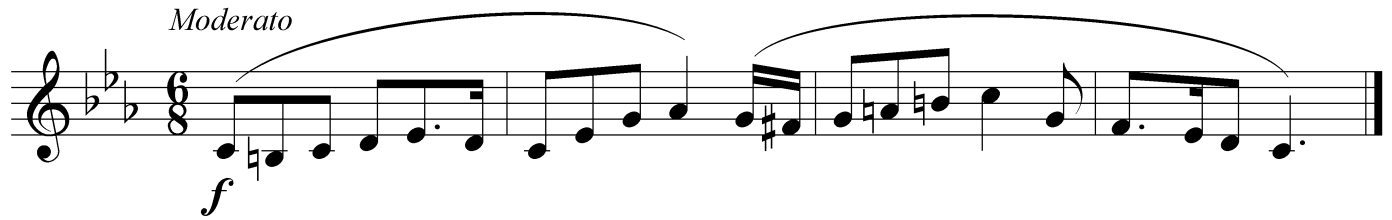
Question 1. Look over the melody and begin practicing. You have 75 seconds to practice. This is the starting pitch of the printed melody. 



2007 AP® MUSIC THEORY FREE-RESPONSE QUESTIONS

Question 2. Look over the melody and begin practicing. You have 75 seconds to practice. This is the starting pitch of the printed melody. 

Moderato



f