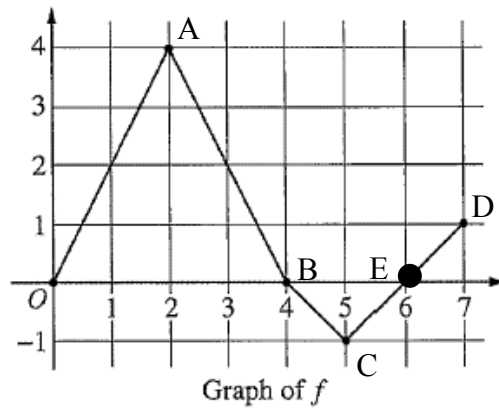


Adaptation of 2003 Calculus AB Form B question 5 for Algebra 1



1. Find the y -intercept of the graph of f .
2. What is the slope of segment \overline{OA} ?
3. Write the equation of the line passing through points O and A .
4. Verify that $(1, 2)$ is a point on the line \overline{OA} .
5. Find $f(2)$.
6. For which values of x is $f(x) = 2$?
7. For which values of x is $f(x)$ positive?
8. For which values of x does $f(x)$ have positive slope?

9. Find the slope of segment \overline{AB} .
10. Write the equation of the line passing through point A and B .
11. Find the length of segment \overline{AB} .
12. Graph $g(x) = 2$. On the graph shade the area enclosed by the graphs of $f(x)$ and $g(x)$.
13. Find the area of the region enclosed by the graphs of $f(x)$ and $g(x)$. Show the work that leads to your conclusion.